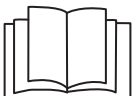




Back Bar Cooler

Instruction manual



Caution: Read the instructions before using the appliance

Model:
GL015-A/GL016-A/GL017-A/GE997-A/GE998-A/GE999-A

Safety Instructions

- Position on a flat, stable surface.
- A service agent/qualified technician should carry out installation and any repairs if required. Do not remove any components or service panels on this product.
- **In Queensland the service agent/qualified technician MUST hold a Gas Work Authorisation or License for hydrocarbon refrigerants if the appliance gas system is being opened or charged.**
- Consult Local and National Standards to comply with the following:
 - Health and Safety at Work Legislation
 - Fire Precautions
 - Wiring Regulations
 - Building Regulations
- DO NOT immerse in water, or use steam/jet washers to clean the unit.
- DO NOT cover the appliance when it is operating.
- DO NOT store food in the appliance.
- Always carry, store and handle the appliance in a vertical position.
- Never tilt the appliance more than 45° from the vertical.
- Not suitable for outdoor use.
- Keep all packaging away from children. Dispose of the packaging in accordance with the regulations of local authorities.
- If the power cord is damaged, it must be replaced by a POLAR agent or a recommended qualified technician in order to avoid a hazard.
- This appliance is not intended for use by persons (including children) with reduced physical, sensory or mental capabilities, or lack of experience and knowledge, unless they have been given supervision or instruction concerning the use of the appliance by a person responsible for their safety.
- Polar recommend that this appliance should be periodically tested (at least annually) by a Competent Person. Testing should include, but not be limited to: Visual Inspection, Polarity Test, Earth Continuity, Insulation Continuity and Functional Testing.

Caution: Risk of Fire

- Do not store explosive substances such as aerosol cans with a flammable propellant in this appliance.

Warning: Keep all ventilation openings clear of obstruction. Unit should not be boxed in without adequate ventilation.

- **To comply with AS/NZS 60079.10.1:2009: Ensure there are not sources of ignition in any area where refrigerant could gather in the event of a leak.**
- **Electrical equipment should not be placed under the vent or where refrigerant could gather in the event of a leak.**
- **Warning:** Do not use mechanical devices or other means to accelerate the defrosting process, other than those recommended by the manufacturer.
- **Warning:** Do not damage the refrigerant circuit.
- **Warning:** Do not use electrical appliances inside the food storage compartments of the appliance.

Introduction

Please take a few moments to carefully read through this manual. Correct maintenance and operation of this machine will provide the best possible performance from your POLAR product.

Pack Contents

The following is included:

ALL MODELS

- POLAR Back Bar Cooler
- Key
- Instruction manual

- 1 DOOR MODEL: 2 adjustable shelves
- 2 DOOR MODEL: 4 adjustable shelves
- 3 DOOR MODEL: 6 adjustable shelves

POLAR prides itself on quality and service, ensuring that at the time of unpacking the contents are supplied fully functional and free of damage.

Should you find any damage as a result of transit, please contact your POLAR dealer immediately.

Installation

Note: Not for use in vans or trailers, food trucks or similar vehicles.

If the unit has not been stored or moved in an upright position, let it stand upright for approximately 12 hours before operation. If in doubt allow to stand.

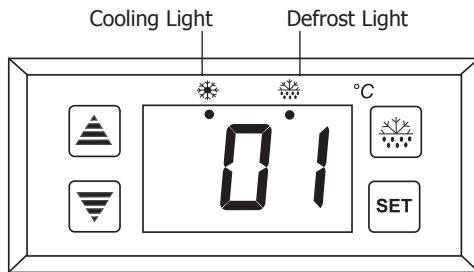
1. Remove the appliance from the packaging and the protective film from all surfaces.
2. Avoid positioning the appliance in direct sunlight or damp areas.
3. To optimize performance and longevity, ensure a minimum clearance of 2.5cm is maintained between the unit and walls and other objects, with a minimum 20cm clearance on the top. **NEVER LOCATE NEXT TO A HEAT SOURCE.**
4. Insert the slide-out shelf/shelves at the desired levels and place the smaller shelf/shelves on the floor of the appliance.
5. If necessary, adjust the screw feet of the appliance to make it level.

Note: Before using the appliance for the first time, clean the shelves and interior with soapy water then dry well.

Operation

Control Panel

The control panel is located below the doors on the front of the appliance.



Turn On

1. Close the door of the appliance.
2. Connect the appliance to a mains power supply.
3. Turn the light switches On [I] or Off [O] as desired.

Note: The Cooling Light is illuminated when the appliance is chilling the interior cabinet.

Set the Operating Temperature

1. Press the [SET] button. The display will flash.
2. Press the [▲] or [▼] buttons to display the required temperature.
3. Press the [SET] button to store the temperature.

Manual Defrost

- POLAR Back Bar Coolers feature an automatic defrost. However, should the appliance require an additional defrost period press and hold the [❄️] and [SET] button for 6 seconds.
- Automatic defrost cycles are every 6 hours and last 20 minutes (factory defaults).
- To stop the Defrost press and hold the [❄️] and [SET] button for 6 seconds.

Note: If a manual defrost is started this resets the automatic defrost timer. During defrost periods the Defrost light is illuminated.

Cleaning, Care & Maintenance

- **Switch off and disconnect from the power supply before cleaning**
- Clean the interior of the appliance as often as possible.
- Do not use abrasive cleaning agents. These can leave harmful residues.
- Always wipe dry after cleaning.

Refrigeration tips:

- **Condensation and ice will form with frequent and prolonged opening of the doors.**
- **Operating outside of the recommend temperature range and placing next to a heat source will also increase the amount of ice and internal/external condensation. If external condensation occurs wipe the surface down with a cloth.**
- **Excessive ice will result in longer running times that will increase energy consumption and increase the deterioration of components.**
- **If the gasket or seal is damaged or deformed, energy consumption will increase. To restore efficiency, replace gasket.**
- **Do not obstruct fans and do not exceed max load lines, as doing so will impact air distribution and increase energy usage.**

Cleaning the Condenser

Periodically cleaning the condenser can extend the life of the appliance. The condenser is located at the back of the appliance.

Failure to clean the condenser will increase energy consumption, reduce the performance and life of your Polar unit, and thus may invalidate your warranty.

Note: Use a soft brush or vacuum cleaner to clean the fins of the condenser, taking care not to damage the fins.

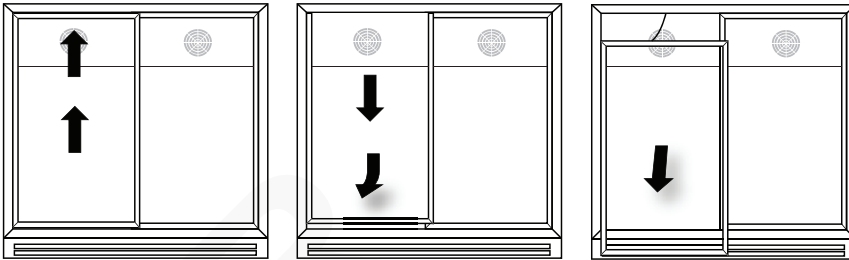
Removing the Doors (Sliding Doors only)

When cleaning the appliance or replacing the lamp it may be necessary to remove the doors to improve access. To remove the doors:

1. Holding the sides of the first door, lift the door into the upper runner.
2. Pull the bottom of the door out and down simultaneously so the door clears the bottom runner.

Note: The automatic door-closing system means that the doors are attached to the appliance by a cord. Do not break or remove this cord.

3. Place the door to the side of the appliance.
4. Repeat for the remaining doors.
5. To replace the doors, slot them into the upper runner and then push the bottom of the door in and down to slot it in to the bottom runner.



Troubleshooting

A qualified technician must carry out repairs if required.

Fault	Probable Cause	Solution
The appliance is not working	The unit is not switched on	Check unit is plugged in correctly and switched on
	Plug or lead is damaged	Replace Plug or lead
	Mains power supply fault	Check mains power supply
The appliance turns on, but the temperature is too high/low	Condenser blocked with dust	Clean Condenser
	Doors are not shut properly	Check doors are shut and seals not damaged
	Appliance is located near a heat source or air flow to the condenser is being interrupted	Move the appliance to a more suitable location
	Ambient temperature is too high	Increase ventilation or move appliance to a cooler position
	Insufficient airflow to the fans	Remove any blockages to the fans
	Appliance is overloaded	Reduce the amount stored in the appliance
	Factory default parameters adjusted	Consult a qualified Technician
The appliance is unusually loud	Appliance is touching a neighbouring object	Check installation position and change if necessary
	Appliance has not been installed in a level or stable position	Check installation position and change if necessary

Technical Specifications

Note: Due to our continuous improvement process, the product specifications are subject to change without notice.

Model	Voltage	Power	Current	Temp Range	Net usable capacity	Refrigerant	Dimensions H x W x D mm	Net Weight (kg)	Max. load of each shelf
GL015-A	230V~ 50Hz	180W	1.25A	2°C to 10°C	138 L	R600a 37g	900 x 600 x 520	40	28kg
GL016-A		230W	1.66A	2°C to 10°C	208 L	R600a 62g	900 x 900 x 520	55	25kg
GL017-A		280W	1.66A	2°C to 10°C	330 L	R600a 85g	900 x 1350 x 520	70	25kg
GE997-A		180W	1.25A	2°C to 10°C	128 L	R600a 37g	850 x 600 x 520	38	28kg
GE998-A		230W	1.66A	2°C to 10°C	198 L	R600a 62g	850 x 900 x 520	53	25kg
GE999-A		280W	1.66A	2°C to 10°C	320 L	R600a 85g	850 x 1350 x 520	68	25kg

Note: For optimal product performance and efficiency, please ensure to mind the net usable capacity (load limit) when filling.

Electrical Wiring

The plug is to be connected to a suitable mains socket.

POLAR appliances are wired as follows:

- Live wire (coloured brown) to terminal marked L
- Neutral wire (coloured blue) to terminal marked N
- Earth wire (coloured green/yellow) to terminal marked E

This appliance must be earthed.



If in doubt consult a qualified electrician.

Electrical isolation points must be kept clear of any obstructions. In the event of any emergency disconnection being required they must be readily accessible.

Compliance

The product must not be disposed of as household waste. To help prevent possible harm to human health and/or the environment, the product must be disposed of in an approved and environmentally safe recycling process. For further information on how to dispose of this product correctly, contact the product supplier, or the local authority responsible for waste disposal in your area.

POLAR parts have undergone strict product testing in order to comply with regulatory standards and specifications set by international, independent, and federal authorities.

POLAR products have been approved to carry the following symbol:



All rights reserved. No part of these instructions may be produced or transmitted in any form or by any means, electronic, mechanical, photocopying, recording or otherwise, without the prior written permission of POLAR.

Every effort is made to ensure all details are correct at the time of going to press, however, POLAR reserve the right to change specifications without notice.

DECLARATION OF CONFORMITY

• Conformiteitsverklaring • Déclaration de conformité • Konformitätserklärung • Dichiarazione di conformità •
• Declaración de conformidad

Equipment Type • Uitrustingstype • Type d'équipement • Gerätetyp • Tipo di apparecchiatura • Tipo de equipo		Model • Modèle • Modell • Modello • Modelo	
Back Bar Cooler: 1. Single Solid Hinged Door 850mm - Black 2. Double Solid Hinged Door 850mm - Black 3. Triple Solid Hinged Door 850mm - Black 4. Single Door - Black 5. Double Hinged Door - Black 6. Double Sliding Door - Black 7. Triple Hinged Door - Black 8. Double Hinged Door - St/St exterior 9. Triple Sliding Door - Black 10. Single Door - St/St exterior	11. Triple Hinged Door - St/St exterior 12. Double Sliding Door 850mm - Black 13. Single Hinged Door 850mm - Black 14. Double Hinged Door 850mm - Black 15. Triple Sliding Door 850mm - Black 16. Triple Hinged Door 850mm - Black 17. Single Hinged Solid Door - Black 18. Double Solid Hinged Door - Black 19. Triple Hinged Solid Door - Black	1. GE997 (-E & -A) 2. GE998 (-E & -A) 3. GE999 (-E & -A) 4. GL001 (-E & -A) 5. GL002 (-E & -A) 6. GL003 (-E & -A) 7. GL004 (-E & -A) 8. GL008 (-E & -A) 9. GL006 (-E & -A) 10. GL007 (-E & -A)	11. GL009 (-E & -A) 12. GL010 (-E & -A) 13. GL011 (-E & -A) 14. GL012 (-E & -A) 15. GL013 (-E & -A) 16. GL014 (-E & -A) 17. GL015 (-E & -A) 18. GL016 (-E & -A) 19. GL017 (-E & -A)
Application of Territory Legislation & Council Directives(s) Toepassing van Europese Richtlijn(en) • Application de la/des directive(s) du Conseil • Anwendbare EU-Richtlinie(n) • Applicazione delle Direttive • Aplicación de la(s) directiva(s) del consejo		Machinery Directive 2006/42/EC Supply of Machinery (Safety) Regulations 2008 EN 60335-1:2012 +A11:2014 +A13:2017 +A1:2019 +A14:2019 +A2:2019 +A15:2021 EN 60335-2-89:2010 +A1:2016 +A2:2017 EN 62233:2008 Electro-Magnetic Compatibility (EMC) Directive 2014/30/EU - recast of 2004/108/EC Electromagnetic Compatibility Regulations 2016 (S.I. 2016/1091) EN IEC 55014-1: 2021 EN IEC 55014-2: 2021 EN IEC 61000-3-2: 2019+A1:2021 EN 61000-3-3: 2013+A1:2019+A2: 2021 Restriction of Hazardous Substances Directive (RoHS) 2015/863 amending Annex II to Directive 2011/65/EU Restriction of the Use of Certain Hazardous Substances in Electrical and Electronic Equipment Regulations 2012 (S.I. 2012/3032) Regulation (EC) No 1935/2004- Food Contact Materials (FCM) Regulation (EC) No 1935/2004 on Materials and Articles intended to Come into Contact with Food	
Manufacturer Name • Naam fabrikant • Nom du fabricant • Name des Herstellers • Nome del fabbricante • Nombre del fabricante		Nisbets Limited	

I, the undersigned, hereby declare that the equipment specified above conforms to the above Territory Legislation, Directive(s) and Standard(s).

Ik, de ondergetekende, verklaar hierbij dat de hierboven gespecificeerde uitrusting goedgekeurd is volgens de bovenstaande Richtlijn(en) en Standaard(en).

Je soussigné, confirme la conformité de l'équipement cité dans la présente à la / aux Directive(s) et Norme(s) ci-dessus

Ich, der/die Unterzeichnende, erkläre hiermit, dass das oben angegebene Gerät der/den oben angeführten Richtlinie(n) und Norm(en) entspricht.

Il sottoscritto dichiara che l'apparecchiatura di sopra specificata è conforme alle Direttive e agli Standard sopra riportati.

El abajo firmante declara por la presente que el equipo arriba especificado está en conformidad con la(s) directiva(s) y estándar(es) arriba mencionadas.

Date • Data • Date • Datum • Data •

Fecha

Signature • Handtekening •

Signature • Unterschrift Firma •

Firma

Full Name • Volledige naam • Nom et

prénom • Vollständiger Name • Nome

completo • Nombre completo

Position • Functie • Fonction •

Position • Qualifica • Posición

Manufacturer Address • Adres

fabrikant • Adresse du fabricant •

Adresse des Herstellers • Indirizzo del

fabbricante • Dirección del fabricante

29th Dec 2025

Signed by:

Ashley Hooper

AB6DB7656FFB441...

Ashley Hooper

Group Head of Product Quality & Compliance

Fourth Way,
Avonmouth, Bristol,
BS11 8TB
United Kingdom

Unit 9003,
Blarney Business Park,
Blarney, Co. Cork
Ireland

15 Badgally Road,
Campbelltown
NSW 2560



POLAR



<http://www.polar-refrigerator.com/> 

GL015-A-GL017-A_GE997-A-GE999-A_A5_v5_2026/01/09